



Cotleigh Road NW6

Parkheat
Sold on Service





Cotleigh Road, NW6 Offers In Excess Of £400,000, Share of Freehold Camden Band C

- Spacious 1 bedroom apartment
- Top floor of period conversion
- Impressive south facing 18' reception room
- 698 sq ft / 64.84 sq m
- Share of freehold and chain free
- Ideal first time buy or investment property
- 7 minute walk to West Hampstead stations (Jubilee, Overground and Thameslink)
- 8 minute walk to all shops, restaurants, cafés of West End Lane



Belsize Park
208 Haverstock Hill
NW3 2AG
Sales 020 7431 1234
Lettings 020 7431 3104
nw3@parkheath.com

South Hampstead
8a Canfield Gardens
NW6 3BS
Sales 020 7625 4567
Lettings 020 7644 0800
nw6@parkheath.com

West Hampstead
192 West End Lane
NW6 1SG
Sales & Lettings
Tel 020 7794 7111
192@parkheath.com

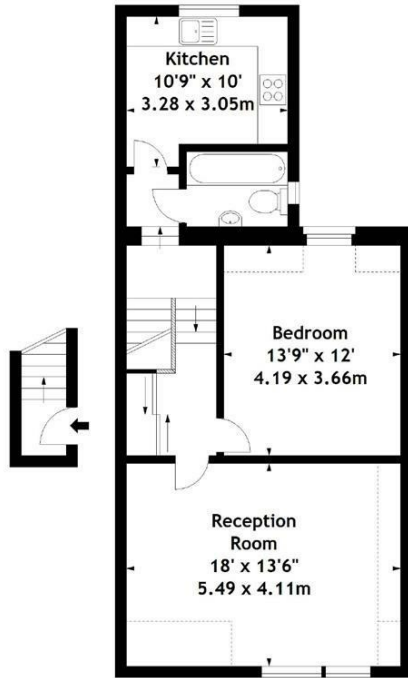
Parkheath
Sold on Service

Kentish Town
148 Kentish Town Rd
NW1 9QB
Tel 020 7485 0400
kt@parkheath.com

Kensal Rise
54-56 Chamberlayne Rd
NW10 3JH
Tel 020 8960 4845
kensal@parkheath.com

Property Management
192 West End Lane
NW6 1SG
020 7433 6174
pm@parkheath.com

Cotleight Road, NW6
Approx. Gross Internal Area
698 Sq Ft - 64.84 Sq M

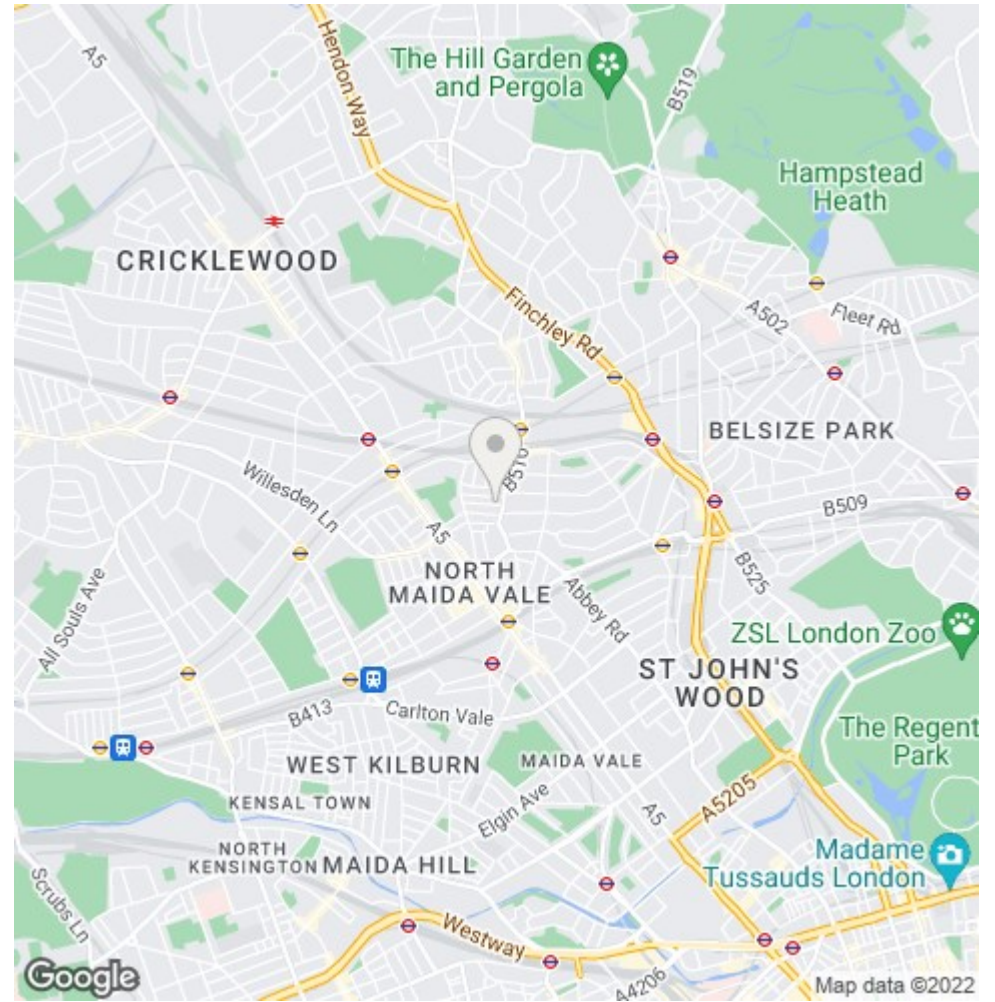


First Floor
Entrance

Second Floor

Measured in accordance with RICS guidelines. Every attempt is made to ensure accuracy, however all measurements are approximate. This floor plan is for illustrative purposes only and is not to scale.

© Datography Ltd 2017
Photographs * Floorplans * Virtual Tours
Tel: 0845 643 4401 www.datography.com



The particulars do not constitute part of an offer or contract. The particulars, including text, photographs and plans, are for the guidance only of prospective purchasers/tenants and must not be relied upon as statements of fact. The descriptions provided therein represent the opinion of the author and whilst given in good faith should not be construed as statements of fact. Nothing in these particulars shall be deemed a statement that the property is in good condition or otherwise or that any services or facilities are in good working order. All measurements are approximate